

SCREW PITCH GAGES

SERIES 789:



- Useful for determining the pitch of various threads.
- Consists of a substantial steel case with folding leaves. Each leaf has teeth corresponding to a definite pitch marked on the leaf.
- Features a locking device so leaves can be securely locked in position.

V, Unified, American National 60° Threads

Cat. No.	EDP No.	No. of Leaves	TPI Range	Threads per Inch	Price
155**	50588	27	2-1/4 - 28	2-1/4, 2-3/8, 2-1/2, 2-5/8, 2-3/4, 2-7/8, 3, 3-1/4, 3-1/2, 4, 4-1/2, 5, 5-1/2, 6, 7, 8, 9, 10, 11, 12, 13, 14, 16, 18, 20, 24, 28	
6 ²	50035	30	4 - 42	4, 4-1/2, 5, 5-1/2, 6, 7, 8, 9, 10, 11, 11-1/2, 12, 13, 14, 15, 16, 18, 20, 22, 24, 26, 27, 28, 30, 32, 34, 36, 38, 40, 42	
474 ²	52486	28	4 - 80	4, 4-1/2, 5, 6, 7, 8, 9, 10, 11, 11-1/2, 12, 13, 14, 16, 18, 20, 24, 27, 28, 32, 36, 40, 44, 48, 56, 64, 72, 80	
472 ²	52484	51	4 - 84	First Corner 17 Leaves: 4, 4-1/2, 5, 5-1/2, 6, 7, 8, 9, 10, 11, 11-1/2, 12, 13, 14, 15, 16, 18 Second Corner 17 Leaves: 20, 22, 24, 26, 27, 28, 30, 32, 34, 36, 38, 40, 42, 44, 46, 48, 50 Third Corner 17 Leaves: 52, 54, 56, 58, 60, 62, 64, 66, 68, 70, 72, 74, 76, 78, 80, 82, 84	
473 ¹	52485	30	6 - 60	6, 7, 8, 9, 10, 11, 11-1/2, 12, 13, 14, 15, 16, 18, 20, 22, 24, 26, 27, 28, 30, 32, 34, 36, 38, 40, 42, 48, 50, 56, 60	

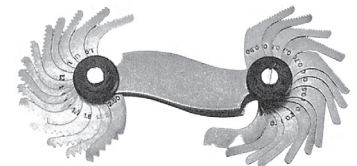
International Metric Standard 60° Threads

Cat. No.	EDP No.	No. of Leaves	TPI Range	Pitches in mm	Price
156M*	50589	28	.25 - 2.5mm	.25, .30, .35, .40, .45, .50, .55, .60, .65, .70, .75, .80, .85, .90, 1, 1.1, 1.2, 1.25, 1.3, 1.4, 1.5, 1.6, 1.7, 1.75, 1.8, 1.9, 2, 2.5	
159M**	50591	28	1 - 11.5mm	0.5, .75, 1, 1.1, 1.25, 1.5, 1.75, 2, 2.5, 3, 3.5, 4, 4.5, 5, 5.5, 6, 6.5, 7, 7.5, 8, 8.5, 9, 9.5, 10, 10.5, 11, 11.5	

* With locking device ** With locking device and 60° center gage.
¹ With positive stop and 11-1/2 and 27 pipe thread pitches
² With locking device and 11-1/2 and 27 pipe thread pitches

SCREW PITCH (THREAD) GAGES

SERIES 245:



Product Description

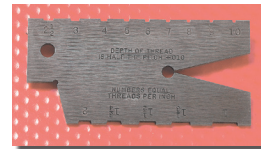
- Very handy gage to quickly determine the pitch of various threads
- Made of high quality polished tool steel
- Features a locking device at both ends to securely lock the leaves
- All leaves clearly marked with size
- Comes in a plastic pouch

For gaging of 60° "V" thread (except where noted). Each leaf swings out and can be locked into position. Each gage is marked with its size.

TPI Range/ No. of Leaves	Range of Pitches	Order No.	Price
4-42 (30)	4,4-1/2,5,5-1/2,6,7,8,9,10,11,11-1/2,12,13,14,15,16,18,20,22,24,26,27,28,30,32,34,36,38,40,42	1665442	
4-84 (51)	All of above plus : 44,46,48,50,52,54,56,58,60,62,64,66,68,70,72,74,76,78,80,82,84	1670484	
0.25-2.5mm (28)	.25,.30,.35,.40,.45,.50,.55,.60,.65,.70,.75,.80,.85,.90,1.00,1.10,1.20,1.25,1.30,1.40,1.50,1.60,1.70,1.75,1.80,1.90,2.00,2.50	1675001	
0.40-6.0mm (20)	.40,.45,.50,.60,.70,.75,.80,1.00,1.25,1.50,1.75,2.00,2.50,3.00,3.50,4.00,4.50,5.00,5.50,6.00	1675002	
4-42 & 0.25 to 6.0mm (31+24=55)	Combination-American Nat'l 60° and Metric 60° Threads	2451116	
4-62 & 0.25 to 6.0mm (28+24=52)	Combination-Whitworth Standard 55° and Metric Standard 60°	2451118	
4-62G (28)	Whitworth Standard 55°	2451120	

29° ACME SCREW THREAD GAGE

STARRETT SERIES 284:
SERIES 245:



Used in grinding and setting tools when cutting Acme threads. Range: 1-10 threads per inch.

PRECISION TOOLS

Quality Precision Tools

The Choice Is Yours!!!

MEDA SUPERIOR IMPORT	
Order No. 2450029	Price <input style="width: 50px;" type="text"/>
PEC TOOLS - USA	
Order No. 1695029	Price <input style="width: 50px;" type="text"/>
STARRETT - USA — Catalog No. 284	
Order No. 51319	Price <input style="width: 50px;" type="text"/>

FEELER OR THICKNESS GAGES **MEGA**
 SERIES 247: Superior Import



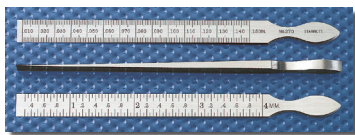
- Each gage set comprised of thin polished steel blades within a steel case.
- Appropriate thickness clearly marked on each blade (inch and millimeter).
- Approximate length 3-1/2" (90mm)
- Used to check bearing clearance in auto industry, flatness of jigs and fixtures, adjusting spark plugs, etc.

No. of Leaves	Leaf Thickness Range	Straight Blade		Tapered Blade	
		Order No.	Price	Order No.	Price
9	.0015"-.015"	1680009		1682009	
26	.0015"-.025"	1680026		1682026	
20	.05-1.00mm	1685120		1685020	

See our **STOCK MATERIALS** section for Thickness (Feeler) Gage material in:
 1/2" x 12" strips,
 1/2" x 25 foot coils,
 and assortments.



NO. 270 TAPER GAGE
 STARRETT SERIES 270:



- The Starrett No. 270 Taper Gage is a very useful tool, especially for bearing work and for gaging slots.
- The gage is made of quality tool steel 7/16" (11 mm) wide by 6-1/4" (160mm) long and is accurately tapered throughout its entire length for quick and convenient measuring of slot widths, etc.
- One side is graduated from .010" to .150 in thousandths of an inch and the reverse side from 0.3 mm to 4 mm in one-twentieth of a mm (0.05 mm).

Catalog No.	EDP No.	Price
270	51292	

THICKNESS GAGES
 English and Metric
 SERIES 789:



Leaves made of tempered steel, carefully finished to correct thickness, individually tested and marked. A locking device is furnished. Leaves may be easily removed or replaced.

Catalog No.	EDP No.	Size Leaves	Range	Price
Inch Reading Thickness Gages with Straight Leaves				
66 (26 leaves)	50314	1/2 x 3-1/32"	.0015, .002, .0025, .003, .004, .005, .006, .007, .008, .009, .010, .011, .012, .013, .014, .015, .016, .017, .018, .019, .020, .021, .022, .023, .024, .025"	
66B (31 leaves)	57097	1/2 x 3-1/32"	.0015, .002, .0025, .003, .004, .005, .006, .007, .008, .009, .010, .011, .012, .013, .014, .015, .016, .017, .018, .019, .020, .021, .022, .023, .024, .025, .026, .028, .030, .032, .035"	
467 (13 leaves)	52464	1/2 x 4-1/2"	.0015, .002, .003, .004, .006, .008, .010, .020, .030, .040, .075, .100, .200"	
172E (8 leaves)	50654	1/2 x 12"	.002, .003, .004, .005, .006, .008, .010, .015"	
Inch Reading Thickness Gages with Tapered Leaves				
66T (26 leaves)	50315	1/2-1/4 x 3-1/32"	.0015, .002, .0025, .003, .004, .005, .006, .007, .008, .009, .010, .011, .012, .013, .014, .015, .016, .017, .018, .019, .020, .021, .022, .023, .024, .025"	
172CT (8 leaves)	50652	1/2-1/4 x 6	.002, .003, .004, .006, .008, .010, .012, .015	
Millimeter Reading Thickness Gages with Straight Leaves				
66MA (20 leaves)	55974	12.7 x 77mm	0.05, 0.10, 0.15, 0.20, 0.30, 0.35, 0.40, 0.45, 0.50, 0.55, 0.60, 0.65, 0.70, 0.75, 0.80, 0.85, 0.90, 0.95, 1.0	
173MA (13 leaves)	57086	12.7 x 77mm	0.03, 0.04, 0.05, 0.06, 0.07, 0.08, 0.09, 0.10, 0.15, 0.20, 0.30, 0.40, 0.50	
467M (13 leaves)	52465	12.7 x 114mm	0.04, 0.05, 0.06, 0.07, 0.08, 0.10, 0.15, 0.20, 0.30, 1.0, 2.0, 3.0, 5.0	
Millimeter Reading Thickness Gages with Tapered Leaves				
172MBT (9 leaves)	50656	12.7-7 x 114mm	0.04, 0.05, 0.06, 0.07, 0.08, 0.10, 0.15, 0.20, 0.30	
173MAT (13 leaves)	57087	12.7-7 x 77mm	.03, .04, .05, .06, .07, .08, .09, .10, .15, .20, .30, .40, .50	
173MCT (13 leaves)	57088	12.7-7 x 152mm		

TAPER (BORE) GAGE
 SERIES 247:



- Handy gage for measuring cylindrical bores, bearing work and for gaging slots.
- Made from matte finished stainless steel
- Clearly etched graduations for precise measurement.

Order No.	Range	Price
2470115	1/32-5/8" 1 to 15mm	